

A10Z30NDAIPO

Home | Security | Lenses | Zoom

A10Z30NDAIPO
F1.5/10-300mm AI Motorzoom Lens,
1/2" C Mount with Potentiometers

Art-Nr. 40236



SLD Security & Communications

Main Features

30x High-Speed Zoom Lens
Suitable for 1/2" and 1/3" Colour and B&W Cameras
C Mount
DC Controlled Iris
4-pin Connector for DC Iris Control

High Standard of Optical and Mechanical Quality
Quality Motors on Focus and Zoom
Potentiometers on Focus and Zoom
Adjustable Slip-ring Mount for Cable Positioning

Specifications

Lens type	zoom
Aspherical technology	no
Nominal format size	1/2"
Flange focal length	17.526mm
Mount	C
Focal length	10 mm - 300 mm
Horizontal angle of view	35,5° - 1,25°
MOD (Minimum object distance)	2,2 m
Aperture range (F)	F1.5~F560
Iris control	auto iris
Accuracy at +20°C	+/-15%
Screw-in depth	4.0mm
Filter screw size	M100x1mm
Response time	approx. 4 ~5sec. (at 8VDC)
Supply voltage range	8.0VDC +/-20%
Max. current consumption/motor (run)	60~80mA

A10Z30NDAIPO

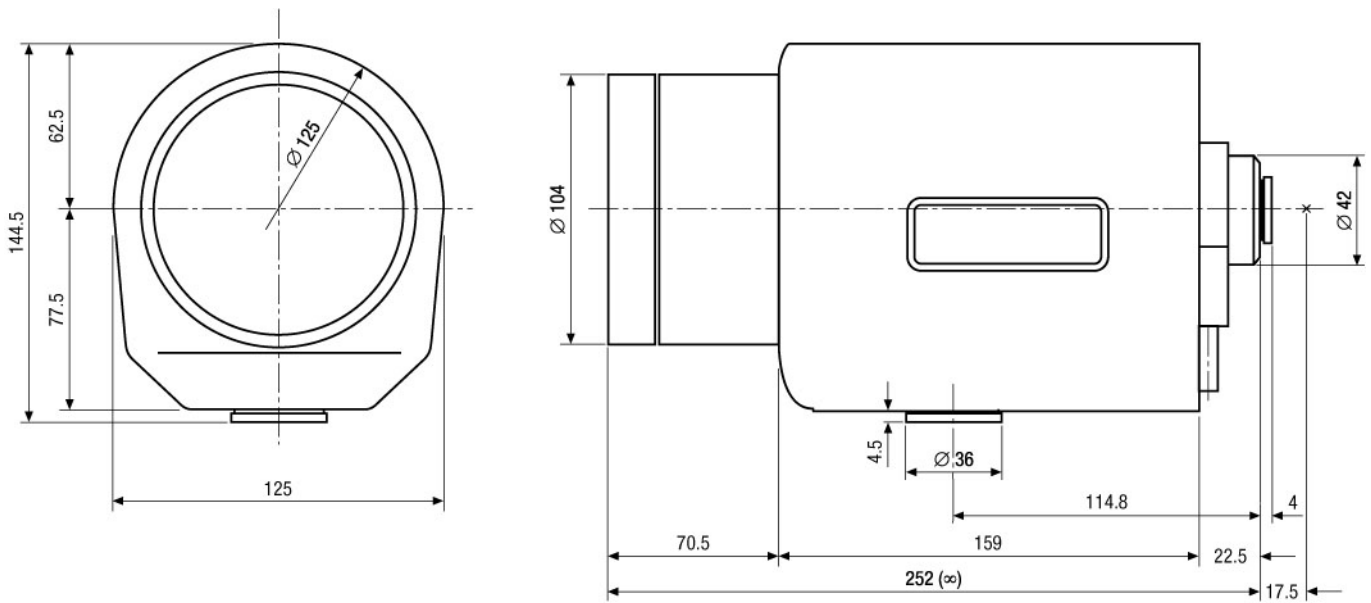
(Continuation Specifications)

Motor clutch on focus/zoom	Yes
Potentiometer on focus and zoom	5kohms
Input signal range	0.5 ~1.0Vp-p (C)VBS
Max. current consumption	40mA
Cable length	>50cm
Temperature range (Operation)	-10° ~+50°C
Dimensions (HxWxD)	See drawing
Weight	3220g

A10Z30NDAIPO

Home | Security | Lenses | Zoom

Technical drawing



Maße/Dimensions: mm

SLD Security & Communications
The Old Forge, Ockham Lane, Ockham, Surrey GU236PH England
Phone +44.1483225633 · Fax +44.1483225634
sales@sld.co.uk · www.sld.co.uk

