

# VKC-1327B-IR/W3

Home | Security | Cameras | Plug & Play

VKC-1327B-IR/W3

1/3" Camera, Day&Night, F1.2/3.8-9.5mm, 560TVL,

IR Illumination, 12VDC/24VAC

**Art-Nr. 96099**



SLD Security & Communications

## Main Features

Weatherproof camera with swivel head bracket  
Sensitivity of 0.2Lux at F1.2 (colour)  
Powerful digital noise reduction (3D DNR)  
Removable IR cut filter (IRCF)  
Sensitivity enhancement up to 128x (DSS function)  
Highlight suppress backlight compensation (HSBLC)

On-screen display (OSD)  
32x Digital zoom/Privacy masking/Motion detection  
30m Night observation distance (15 pcs. IR LEDs)  
Dynamic (light) intensity control (DIC)  
IR corrected lens with no-focus-shift  
Power supply: 12VDC or 24VAC

## Specifications

Series	eneo W3 Plug & Play
System	day&night
Video standard	CCIR/PAL
Sensor size	1/3"
Imager	CCD, Sony Super HAD II Interline Transfer
Active picture elements	470,000, 795(H) x 596(V)
Synchronization	internal
Signal-to-noise ratio	50dB (AGC OFF)
Gamma correction	0.45 / 1.0
Horizontal resolution	560 TVL, (colour), 600 TVL (B&W)
Sensitivity (at 50% video signal)	0,2 Lux, (coulor), 0.07Lux (B&W) at F1.2 (measured)
Automatic electronic shutter (ESC)	1/50 ~ 1/100,000sec.
Manual electronic shutter (MES)	1/50 ~ 1/100,000sec.

# VKC-1327B-IR/W3

(Continuation Specifications)

<b>Low speed shutter</b>	yes, Automatic, 2 ~256 Fps., ON/OFF switchable
<b>Automatic gain control (AGC)</b>	ON/OFF switchable
<b>Digital Noise Reduction (DNR)</b>	yes, 3D
<b>Flickerless function</b>	yes
<b>Mirror function</b>	horizontal, vertical, H/V flip
<b>White balance</b>	2000 ~8000K, automatic tracking
<b>Backlight compensation</b>	HS BLC (eclipser), BLC, center weighted (ON/OFF switchable)
<b>Wide Dynamic Range (WDR)</b>	yes, D-WDR (Digital Wide Dynamic Range)
<b>Aperture Correction (APC)</b>	horizontal and vertical
<b>Brightness</b>	adjustment range: 0 ~100
<b>Sharpness correction</b>	adjustment range: 0 ~31
<b>IR cut filter</b>	switchable
<b>Internal adjustments</b>	zoom & focus, menu access
<b>Video outputs</b>	composite (CVBS)
<b>Lens type</b>	varifocal
<b>Lens</b>	F1.2/F2.0~360 / 3.8~9.5mm with galvanometer controlled iris
<b>Focal length</b>	3,8 mm - 9,5 mm
<b>PTZ support</b>	no
<b>Digital zoom</b>	2x ~32x
<b>Horizontal angle of view</b>	74,2° - 30°
<b>Iris control</b>	DC
<b>MOD (Minimum object distance)</b>	0,15 m
<b>Filter screw size</b>	not available
<b>Illumination</b>	infrared, 17 LEDs 850nm. Integrated light sensor for On/Off switching of the illumination
<b>Illumination range</b>	approx. 30m
<b>Dynamic Light Intensity Control (DIC)</b>	Avoids signal saturation caused by excessive object illumination, or reflection and extends IR LED's life. Limits the increase of current caused by rising temperature or input voltage variation.
<b>Menu languages</b>	English, Korean, Japanese, Chinese
<b>OSD function control</b>	H/V flip (Mirror picture), Positiv/negative, Sharpness & Brightness correction, AGC, D-WDR, MES, DSS, AWB, BLC, Motion detection, Privacy zones masking, Day&Night (automatic/manual), Text
<b>Text display</b>	15 character label, ON/OFF switchable
<b>Activity detection</b>	yes
<b>Motion detector</b>	4 zones, ON/OFF switchable
<b>Privacy zones masking</b>	8 zones masking, ON/OFF switchable
<b>Serial interfaces</b>	no
<b>Cable connection</b>	Wiring for video and voltage supply made, accessible from outside (1.5m long, Video: BNC jack 12/24V input: 2-pin screw terminal)
<b>Mounting</b>	wall or ceiling*)

# VKC-1327B-IR/W3

(Continuation Specifications)

Temperature range (operation)	-20°C ~+50°C
Housing material	aluminium
Housing	outdoor
Integrated wall mount	yes
Hidden cable management	yes
Window screen	Acrylic glass (clear)
Sunshield	no
Window heater	no
Clear Shield	no
Colour (housing)	Pantone 7541
Vandalism resistant	no
Protection rating	IP67
Alarm inputs	-
Alarm outputs	-
Supply voltage	12VDC, 24VAC
Power consumption	4.0watts
Dimensions (HxWxD)	see drawing
Weight	680g
Parts supplied	camera, bag of screws, manual, "Easy Installation" adapter cable, allen key, heat shrink tube
Certificates	CE

## Optional accessories

70527	NE-132/AC24V	Power Supply Unit 230VAC/24VAC (1.0A)
70495	VT-PS12DC-7	Plugable PSU w. Cont. & UK Mains plug-in 100-240VAC/12VDC-1.25A, Regulated
73179	PM-42	Pole Mount Adapter, for Housing Series Candid, W3 Plug&Play
77773	VT-PS12DCDT1	PSU 12VDC/1.0A, Regulated, Desktop Version, 1.8m Cables each w. open ends
88148	W3 INST-KIT1	Installation Kit for W3 Housings with Hidden Junction Boxes

# VKC-1327B-IR/W3

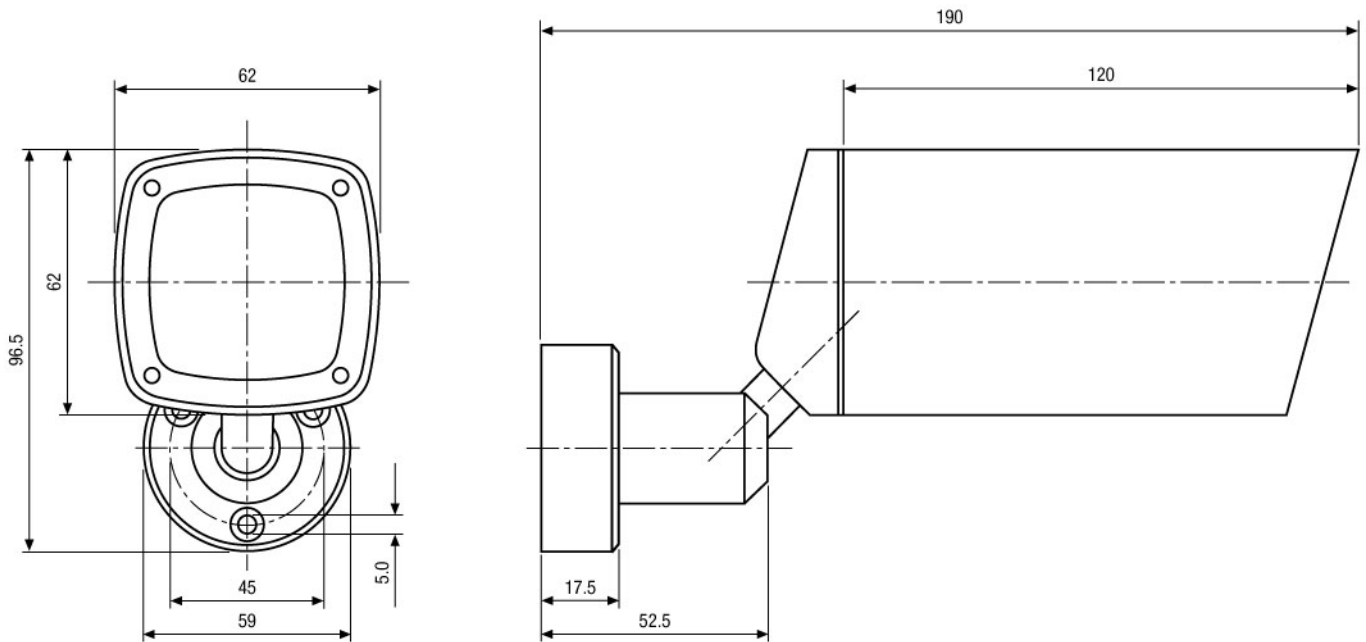
## Product information

\*) For ceiling installation please contact [www.sld.com](#) in advance. They will modify the camera before shipping.

# VKC-1327B-IR/W3

Home | Security | Cameras | Plug & Play

## Technical drawing



Maße/Dimensions: mm

SLD Security & Communications  
The Old Forge, Ockham Lane, Ockham, Surrey GU236PH England  
Phone +44.1483225633 · Fax +44.1483225634  
sales@sld.co.uk · www.sld.co.uk

