

VKCD-1337/IR

Home | Security | Dome Cameras | Fixed

VKCD-1337/IR

1/3" Dome, Fixed, Day&Night, clear, 4-9mm, 540TVL,

IR Illumination, 12V

Art-Nr. 92696



Main Features

For wall and ceiling flush and surface mount
Vandal and tamper-resistant
Integrated F1.5/4-9mm varifocal DC iris lens
Externally adjustable focus & zoom
Overlay low pass filter (OLPF)
Sensitivity of 0.2Lux at F1.2 (colour)

Backlight compensation (BLC)
Automatic white balance (AWB)
IR illumination by 35 integral 850nm LEDs
Manual 3-axis camera gimbal
Supply voltage: 12VDC
Anti-flare double glass

Specifications

System	day&night
Video standard	PAL
Sensor size	1/3"
Imager	CCD
Imager	Sony Super HAD II Interline Transfer
Active picture elements	440,000 (H) 752 x (V) 582
Horizontal resolution	540 TVL
Synchronization	internal
Signal-to-noise ratio	50dB (AGC OFF)
Gamma correction	0.45
Sensitivity (at 50% video signal)	0,24 Lux
Sensitivity (at 50% video signal)	at F1.2
Automatic gain control (AGC)	supplied

VKCD-1337/IR

(Continuation Specifications)

Automatic electronic shutter (ESC)	1/50 ~ 1/100,000sec.
Automatic gain control (AGC)	Included
Low speed shutter	no
Digital Noise Reduction (DNR)	no
Backlight compensation	BLC
Backlight compensation	automatic
Wide Dynamic Range (WDR)	no
White balance	automatic
Aperture Correction (APC)	horizontal and vertical
IR cut filter	OLPF (Overlay Low Pass Filter)
Activity detection	no
Digital zoom	no
Lens type	varifocal
Focal length	4 mm - 9 mm
Horizontal angle of view	71° - 31,6°
MOD (Minimum object distance)	0,15 m
External adjustments	zoom and focus
Video outputs	composite (CVBS), 1Vp-p, (C)VBS, 75ohms, BNC
Rotation range	360°
Alarm inputs	-
Alarm outputs	-
PTZ support	no
Illumination	infrared, 35x LED 850nm
	ja
External connections	video (BNC), 12VDC input (DC plug)
Serial interfaces	no
Housing material	aluminium
Colour (bubble)	clear
Colour (housing)	dark grey
Mounting	ceiling mount, wall mount
Supply voltage	12VDC
Lens	F1.5 ~F300/4 ~9mm with galvanometer driven iris
Supply voltage	(+/-10%)
Power consumption	5.4watts
Temperature range (operation)	-10°C ~+50°C
Protection rating	IP66
Vandalism resistant	yes
Dimensions (HxWxD)	see drawing
Weight	620g

VKCD-1337/IR

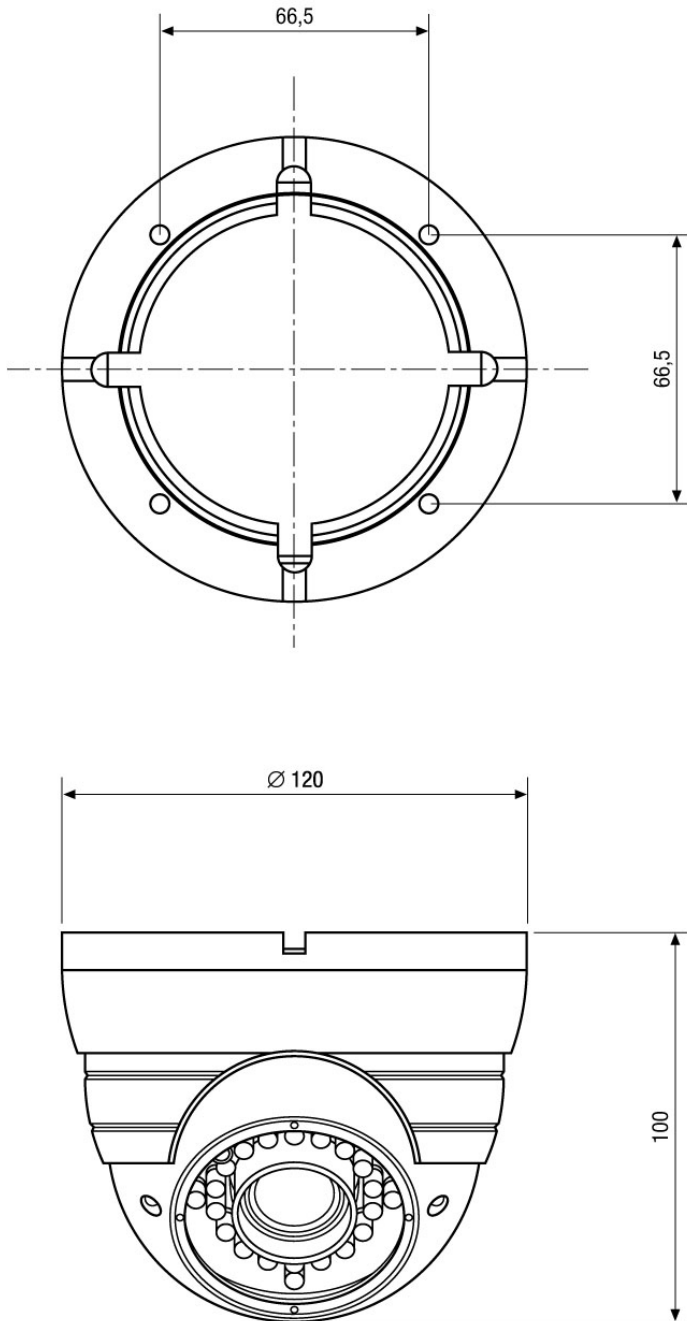
(Continuation Specifications)

Parts supplied	dome camera, bag of screws, special key for lens adjustment, manual
Certificates	CE
Iris control	DC
Alarm inputs	-
Heater	no
Housing	outdoor

VKCD-1337/IR

Home | Security | Dome Cameras | Fixed

Technical drawing



Maße/Dimensions: mm

SLD Security & Communications
The Old Forge, Ockham Lane, Ockham, Surrey GU236PH England
Phone +44.1483225633 · Fax +44.1483225634
sales@sld.co.uk · www.sld.co.uk

