

# VKCD-1324B/IR

Home | Security | Dome Cameras | Fixed

VKCD-1324B/IR

1/3" Dome, Fixed, Day&Night, Pixim, clear,

2.8-10mm, 570TVL, IR LED, 12/24V

**Art-Nr. 92751**



SLD Security & Communications

## Main Features

Digital Pixel System (Pixim Seawolf DSP)

Wide dynamic range: 102dB, 120dB max.

Built-in lens F1.2/2.8-10mm with DC iris control

Sensitivity of 0.4Lux (F1.2 / colour)

Removable IR cut filter

Digital noise reduction (DNR)

Adjustable low speed shutter (DSS)

Motion detection with 4 zones

IR illumination by 35 integral 850nm LEDs

Surface mounting / Clear bubble

Weatherproof camera / Protection rating: IP66

Supply Voltage: 12VDC/24VAC

## Specifications

Video standard	PAL/NTSC
System	day&night
Sensor size	1/3"
Imager	DPS (Pixim)
Synchronization	Internal/Line-lock
Signal-to-noise ratio	52db (AGC OFF)
Sensitivity (at 50% video signal)	0,4 Lux, (colour), 0.06Lux (B&W) at F1.2 (measured)
Horizontal resolution	570 TVL
Rotation range	360°
Low speed shutter	yes, 2 ~64 Fps., ON /OFF switchable
Digital Noise Reduction (DNR)	yes
Privacy zones masking	6 zones masking, ON/OFF switchable
Mirror function	horizontal, vertical, 180° rotation

# VKCD-1324B/IR

(Continuation Specifications)

<b>White balance</b>	automatic, manual
<b>Backlight compensation</b>	no
<b>Gamma correction</b>	0.45 (configuration via menu from 0.25-1.0)
<b>Wide Dynamic Range (WDR)</b>	yes, 102dB typ., 120dB max.
<b>Aperture Correction (APC)</b>	horizontal and vertical
<b>IR cut filter</b>	switchable, motorized, switchable filter. Automatic function depend on the amount of light. Manual switching: see "switching-over colour/b&w". In removed filter position, the colour signal will be switched OFF
<b>Video outputs</b>	composite (CVBS)
<b>Video outputs</b>	BNC
<b>Lens type</b>	varifocal
<b>Focal length</b>	2,8 mm - 10 mm
<b>Horizontal angle of view</b>	81,2° - 27°
<b>Digital zoom</b>	2 ~12x, D-PTZ support
<b>Aperture range (F)</b>	F1.2~F250
<b>Iris control</b>	DC
<b>MOD (Minimum object distance)</b>	0,1 m
<b>Filter screw size</b>	not available
<b>Alarm outputs</b>	-
<b>Illumination</b>	infrared
<b>Activity detection</b>	yes
<b>Motion detector</b>	4 zones, ON/OFF switchable
<b>Illumination</b>	35x LEDs 850nm (17x50°,18x100°), integrated light sensor for On/Off switching of the illumination
<b>Illumination range</b>	approx. 35m (at a good light reflexion and 40% Videosignal)
<b>Menu languages</b>	English
<b>OSD function control</b>	white balance, exposure, iris: DC/manual, DNR, digital zoom, colour intensity, H/V flip (mirror picture), Rotation, motion detection, privacy zones, day&night, sharpness, WDR, PAL/NTSC, freeze
<b>External connections</b>	voltage input, video (BNC)
<b>Serial interfaces</b>	no
<b>Serial interfaces protocols</b>	Coaxitron
<b>Temperature range (operation)</b>	-10°C ~+50°C
<b>Protection rating</b>	IP66
<b>Supply voltage</b>	12VDC, 24VAC, (10.5 ~30VDC, 12 ~29VAC)
<b>Power consumption</b>	10.0watts max.
<b>Vandalism resistant</b>	no
<b>Colour (bubble)</b>	clear,
<b>Mounting</b>	wall mount, flush mount, ceiling mount
<b>Housing</b>	aluminium

# VKCD-1324B/IR

(Continuation Specifications)

<b>Housing material</b>	aluminium
<b>Colour (housing)</b>	Pantone Warm Gray 1C
<b>Dimensions (HxWxD)</b>	see drawing
<b>Weight</b>	approx. 1.0kg, ,
<b>Parts supplied</b>	dome camera, test monitor cable, bag of screws, Torx key, manual
<b>Certificates</b>	CE

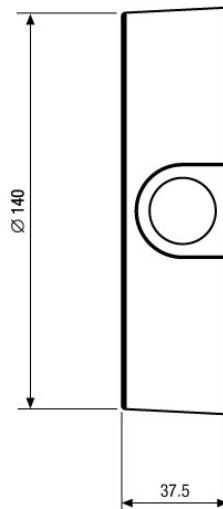
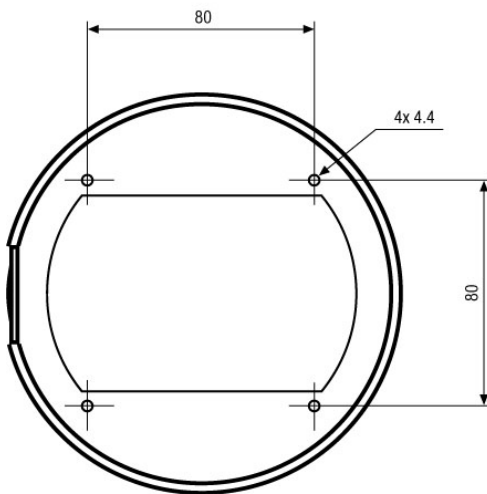
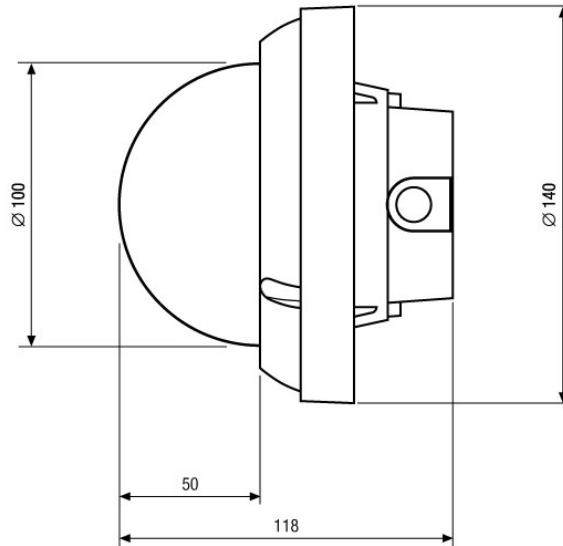
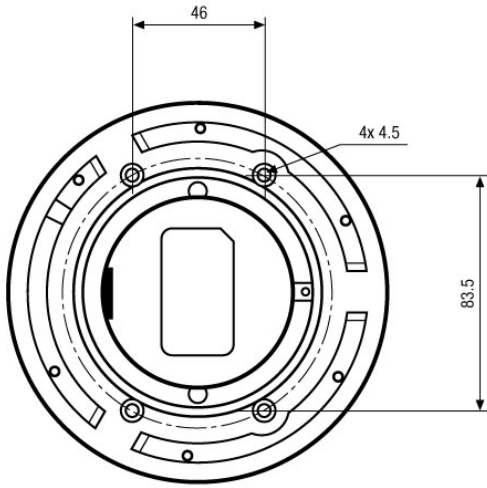
## Optional accessories

<b>70495</b>	<b>VT-PS12DC-7</b>	Plugable PSU w. Cont. & UK Mains plug-in 100-240VAC/12VDC-1.25A, Regulated
<b>77773</b>	<b>VT-PS12DCDT1</b>	PSU 12VDC/1.0A, Regulated, Desktop Version, 1.8m Cables each w. open ends
<b>92389</b>	<b>VKCD-1324/IR-MC</b>	Spot Monitor Cable for VKCD-1324/IR
<b>88149</b>	<b>3/4"- M25X1.5</b>	Thread Adapter 3/4"- Conduit Connection M25x1.5mm for Dome Surface Mount Housing
<b>92209</b>	<b>IRCAM/CB1</b>	Ceiling Mount Kit for VKCD-1322 and VKC-1324/IR
<b>92168</b>	<b>IRCAM/WB2</b>	Wall Mount Kit for VKCD-1322 and VKCD-1324/IR
<b>70527</b>	<b>NE-132/AC24V</b>	Power Supply Unit 230VAC/24VAC (1.0A)

# VKCD-1324B/IR

Home | Security | Dome Cameras | Fixed

## Technical drawing



Maße/Dimensions: mm

SLD Security & Communications  
The Old Forge, Ockham Lane, Ockham, Surrey GU236PH England  
Phone +44.1483225633 · Fax +44.1483225634  
sales@sld.co.uk · www.sld.co.uk

