

VKCD-1331

Home | Security | Dome Cameras | Fixed

VKCD-1331

1/3" Dome, Fixed, Day&Night, WDR, DNR, DIS,

F1.2/2.8-11mm, 600TVL, 12VDC/24VAC

Art-Nr. 92561



SLD Security & Communications

Main Features

1/3" Sony Progressive Scan High Resolution Sensor
Removable IR Cut Filter (ICR)
Sensitivity of 0.22Lux at F1.2 (Colour)
Digital Image Stabilisation (DIS)
Wide Dynamic Range (WDR) up to x160 (44dB)
Automatic Gain Control (AGC)

High and Low Speed Shutter Control (MES/DSS)
Digital Noise Reduction (2D&3D DNR)
Manual 3-axis Camera Gimbal
Multi Lingual On-screen Menu Control
Supply Voltage: 12VDC or 24VAC
For Wall and Ceiling Flush and Surface Mount

Specifications

Video standard	CCIR/PAL
System	day&night
Sensor size	1/3"
Imager	CCD, Sony Super HAD Progressive Scan Interline Transfer
Synchronization	Internal
Signal-to-noise ratio	52db (AGC OFF)
Sensitivity (at 50% video signal)	0.22Lux at F1.2 (colour), 0.13Lux (B&W), Videor measurement result
Horizontal resolution	600 TVL, (colour), 650 TVL (B&W)
Tilt range	55° (+35° ~+90° from horizontal level)
Window blanking	Up to 8 masking areas
Automatic gain control (AGC)	OFF / Low / Mid / High selectable
Manual electronic shutter (MES)	1/120 ~1/10.000sec.
Low Speed Shutter	yes

VKCD-1331

(Continuation Specifications)

Low speed shutter	Automatic, 2 ~256 Fps.
Digital Noise Reduction (DNR)	yes, 2D & 3D
Flickerless function	On/Off switchable
White balance	ATW / AWB, Indoor / Outdoor
White balance (ATW)	Range: 2,500~9,500K, to 1,800~10,500K switchable
Backlight compensation	BLC, Adjustable zones, ON/OFF switchable
Wide Dynamic Range (WDR)	yes, 44dB
Aperture Correction (APC)	Horizontal and vertical
IR cut filter	switchable
Video outputs	CVBS, 1Vp-p, (C)VBS, 75ohms, BNC
Lens mount	integrated lens
Lens type	varifocal
Lens	F1.2 ~F260/2.8 ~11mm
Focal length	2,8 mm - 11 mm
Horizontal angle of view	81,2° - 24,6°
Digital Zoom	10x, ON/OFF switchable
Aperture range (F)	F1.2~F260
Iris control	DC
MOD (Minimum object distance)	0,2 m
Focus range	0.2m ~∞
Filter screw size	not available
Motion Detection Function	4 fields, ON/OFF switchable
Analysis Functions	no
Menu languages	English, German, French, Italian, Spanish
OSD function control	Brightness, Sharpness, Backlight Compensation, Electronic shutter (DSS), Manual high speed shutter (1/120 to 1/10,000), Automatic white balance, Manual white balance (Red/Blue), AGC, DNR, Motion Detection, Flickerless mode, Privacy window, Mirror, Day/Night
Text display	54 character label
Sharpness correction	Adjustment range: 0 ~3
Brightness	Adjustment range: -32 ~+32
External connections	Video (BNC), 2 pin power input
Serial interfaces	no
Temperature range (Operation)	-10° ~+50°C
Heater	optional
Protection rating	IP66
Supply voltage	12VDC, 24VAC, (+/-10%)
Power consumption	2W
Vandalism resistant	yes
Colour (bubble)	clear

VKCD-1331

(Continuation Specifications)

Camera fixing	no
Mounting	surface mount, flush mount, wall mount
Housing	Outdoor
Housing material	Aluminium
Colour (housing)	Pantone Warm Gray 1C
Weight	1.1kg
Parts supplied	Screw set, Pipe cap driver, Torx wrench, Mounting template, Service monitor board and control cable, Manual
Certificates	CE

Optional accessories

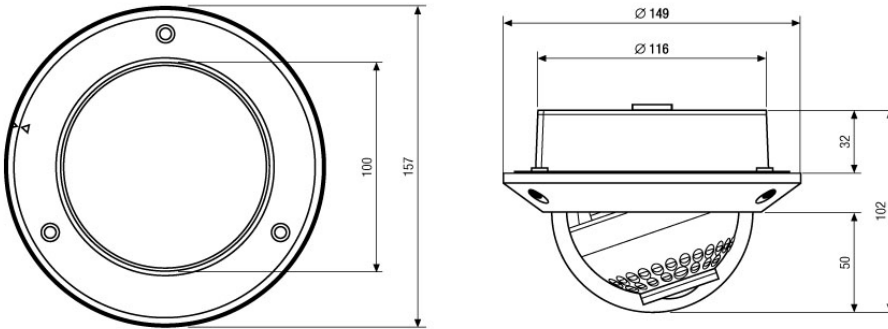
70527	NE-132/AC24V	Power Supply Unit 230VAC/24VAC (1.0A)
70535	VT-PS12DC-8	Plug-in Power Supply Unit 100-240VAC 12VDC (1.0Amp), Regulated, with DC Plug
70495	VT-PS12DC-7	Plugable PSU w. Cont. & UK Mains plug-in 100-240VAC/12VDC-1.25A, Regulated
77773	VT-PS12DCDT1	PSU 12VDC/1.0A, Regulated, Desktop Version, 1.8m Cables each w. open ends
92562	VDOME/WB4	Wall Mount Kit for VKCD-1329/IR and VKCD-1331
92563	VDOME/WEDGE1	Wedge Mount Kit for VKCD-1329/IR and VKCD-1331
92565	VDOME/HB-K1	Heater & Blower Kit 24VAC for VKCD-1329/IR and VKCD-1331

VKCD-1331

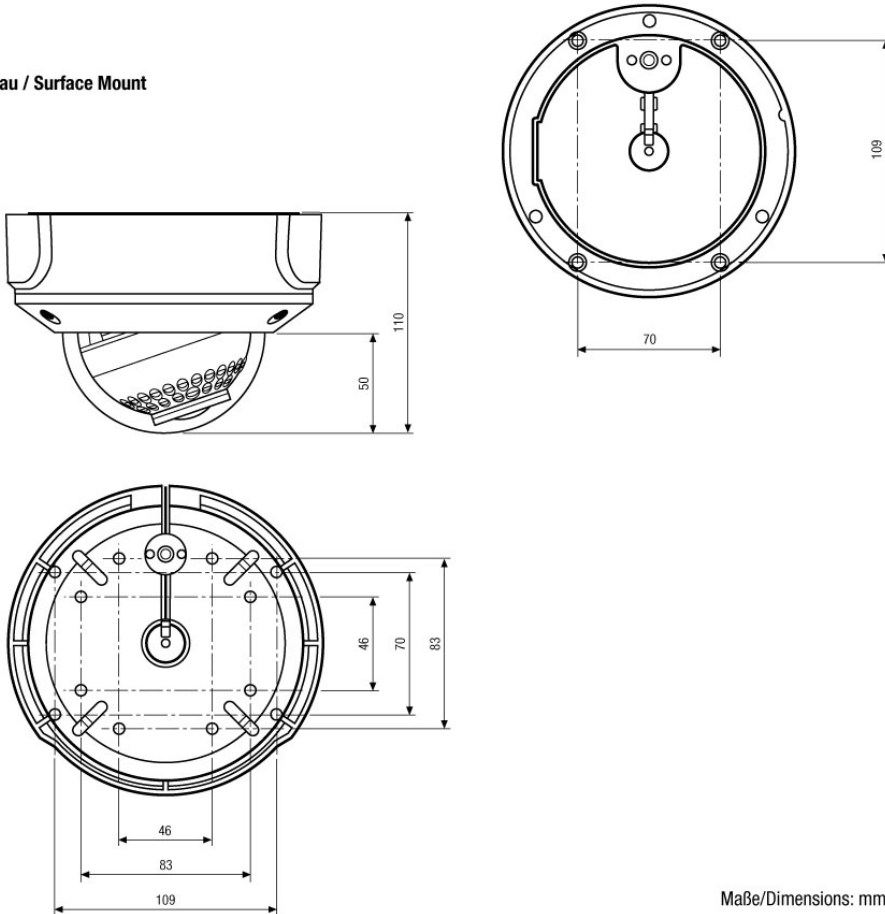
Home | Security | Dome Cameras | Fixed

Technical drawing

Einbau / Flush Mount



Aufbau / Surface Mount



SLD Security & Communications
The Old Forge, Ockham Lane, Ockham, Surrey GU236PH England
Phone +44.1483225633 · Fax +44.1483225634
sales@sld.co.uk · www.sld.co.uk

