

VHM/STLA

Home | Security | Housings | for Boxed Cameras

VHM/STLA
Weatherproof Housing (330mm) w. Heater Thermostat,
Connection Brd,RAL7032,230VAC

Art-Nr. 79405



Main Features

Camera Weatherprotection	Back Part Multi-pin Connection
Housing Body Length: 330mm	3 Cable Entries
Fold-down Housing Body	Screen Heater 230VAC Included
4 Levels of Camera Height Adjustment	Viewing Screen with "Clear-Shield"Technology
Insulated Camera Mounting	Incorporated Carrier Handle
Integrated Connection Board	

Specifications

Series	eneo VHM
Maximum installation length	330
Space for power supply	NE-112 (1 output): 85 mm NE-112/2 (2 outputs): 110 mm
Cable entries	3x M16x1.5mm
Window screen	Coated with "Clear Shield"Technology. With this technology the glass corrosion, caused by environmental pollution, is avoided and screen cleaning cycles will be extended. The coating is UV light resistant, colour neutral and it causes no F-stop loss.
Clear Shield	yes
Window heater	yes, 110~265VAC/9watts (PTC)
Thermostat	On: +16°C, Off: +20°C
Blower	no
Wiper	no
Supply voltage	100~240VAC

VHM/STLA

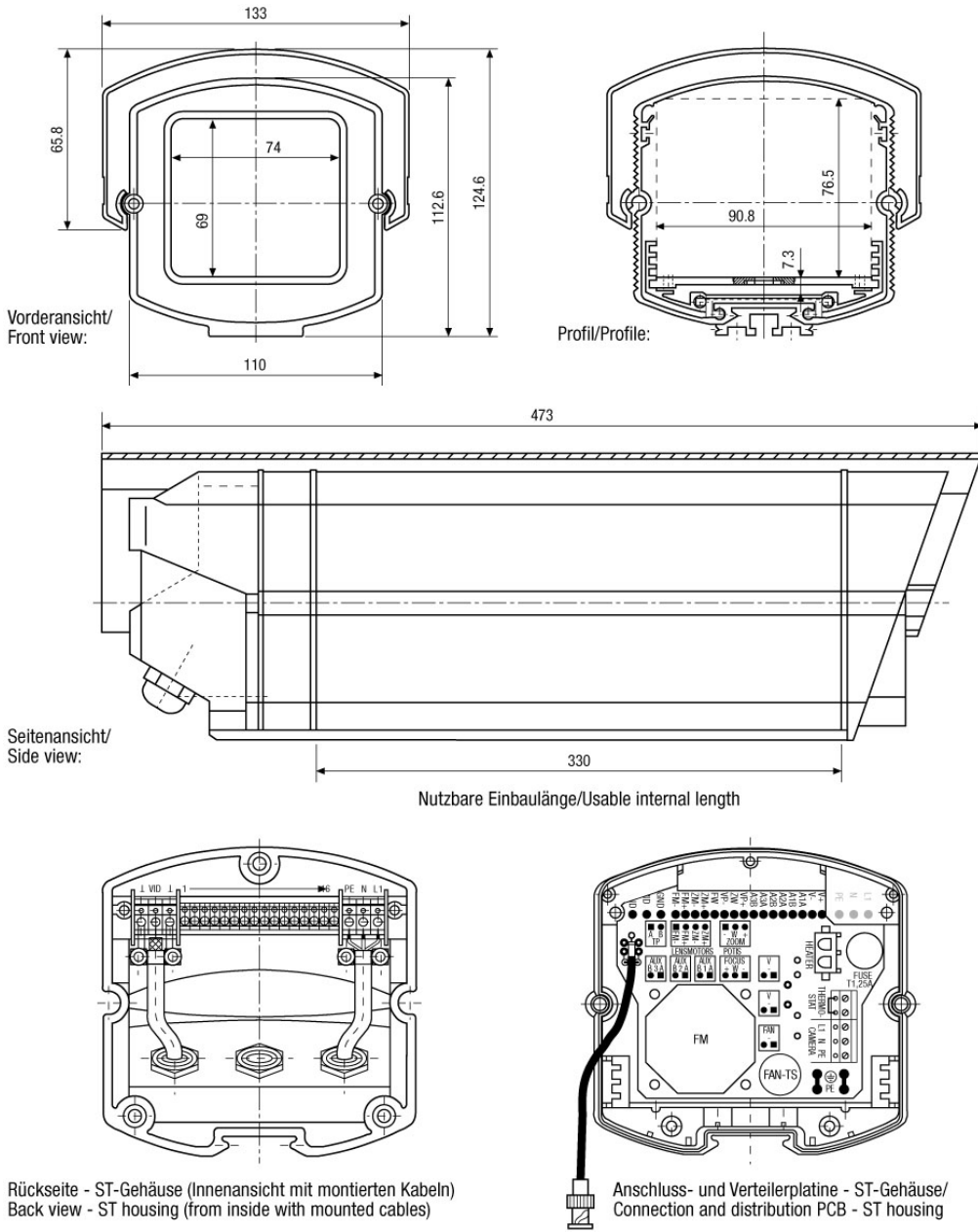
(Continuation Specifications)

Sunshield	yes
Hidden cable management	yes
Integrated wall mount	no
Protection rating	IP66
Housing	Outdoor
Housing material	Aluminium
Housing	Aluminium with plastic covers (ABS)
Colour (housing)	RAL7032
Dimensions (HxWxD)	See drawing
Weight	2.9kg
Parts supplied	Screw set, Thermostat switch, Screw terminal
Certificates	CE

Optional accessories

79364	NE-112	Power Supply Unit 230VAC/12VDC (600mA) for VHM Housing, Regulated
73178	WD-16/MK-KG	Wall Mount with Swivel Head for VHM Weatherproof Housings, RAL7032
70457	AK-3	Camera Connection box, 230VAC Input, 24VAC-3.2A, 12VDC-1A Outputs
72501	PTB-1	Protocol Translator Board, 12VDC for Build-in VHM/ST Housing Series
79491	NE-112/AC24V	Power Supply Unit 230VAC/24VAC (600mA) for VHM Housing
73064	WD-16/MK	Wall Mount with Swivel Head for VHM Weatherproof Housings, RAL7032
79623	VHM/PC-1	Plug-in shield for VHM/EC&ST Housing Series, 330mm, RAL7032
71601	VHM/H24	VHM Window Heater 12-30V (PTC Element)
79423	NE-112/2	Power Supply Unit 230VAC/12VDC (600mA), Regulated, 24VAC (1000mA) f. VHM Housing

Technical drawing



Maße/Dimensions: mm

SLD Security & Communications
 The Old Forge, Ockham Lane, Ockham, Surrey GU236PH England
 Phone +44.1483225633 · Fax +44.1483225634
 sales@sld.co.uk · www.sld.co.uk

