

VHM/STLB

Home | Security | Housings | for Boxed Cameras

VHM/STLB

Weatherproof Housing (330mm) w. Heater Thermostat,

Connection Brd,RAL7032,24VAC

Art-Nr. 79429



Main Features

Camera Weatherprotection

Housing Body Length: 330mm

Fold-down Housing Body

4 Levels of Camera Height Adjustment

Insulated Camera Mounting

Integrated Connection Board

Back Part Multi-pin Connection

3 Cable Entries

Screen Heater 12-30V Included

Viewing Screen with "Clear-Shield"Technology

Incorporated Carrier Handle

Specifications

Series	eneo VHM
Maximum installation length	330
Space for power supply	NE-112 (1 output): 85 mm NE-112/2 (2 outputs): 110 mm
Cable entries	3x M16x1.5mm
Window screen	Coated with "Clear Shield"Technology. With this technology the glass corrosion, caused by environmental pollution, is avoided and screen cleaning cycles will be extended. The coating is UV light resistant, colour neutral and it causes no F-stop loss.
Clear Shield	yes
Window heater	yes, 12~30V/9watts (PTC)
Thermostat	On: +16°C, Off: +20°C
Blower	no
Wiper	no
Supply voltage	12~30VAC/DC

VHM/STLB

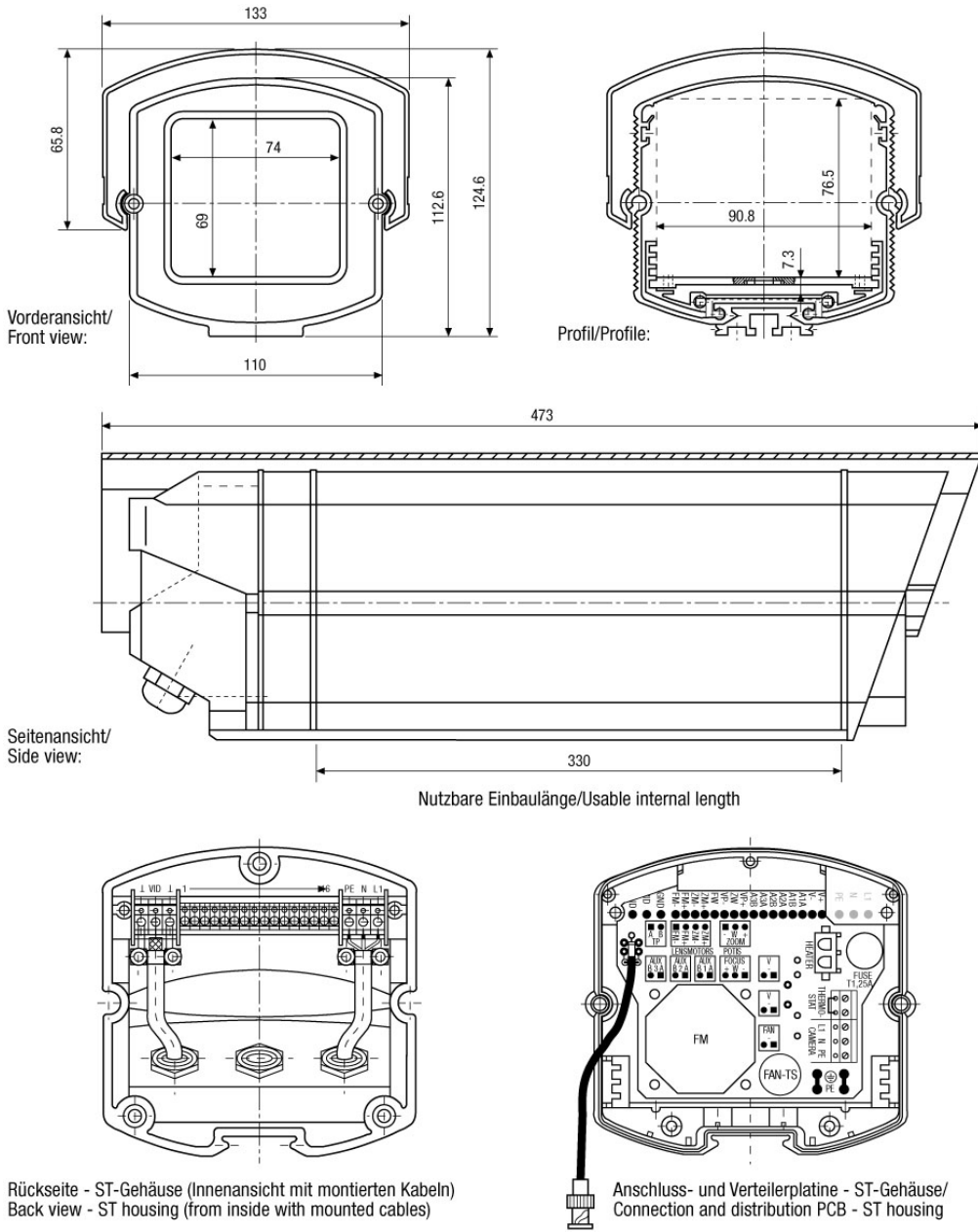
(Continuation Specifications)

Sunshield	yes
Hidden cable management	no
Internal connection for	Power, video, control cables
Integrated wall mount	no
Protection rating	IP66
Housing	Outdoor
Housing material	Aluminium
Housing	Aluminium with plastic covers (ABS)
Colour (housing)	RAL7032
Dimensions (HxWxD)	See drawing
Weight	2.9kg
Parts supplied	Screw set, Thermostat switch, Screw terminal

Optional accessories

73178	WD-16/MK-KG	Wall Mount with Swivel Head for VHM Weatherproof Housings, RAL7032
72501	PTB-1	Protocol Translator Board, 12VDC for Build-in VHM/ST Housing Series
73064	WD-16/MK	Wall Mount with Swivel Head for VHM Weatherproof Housings, RAL7032
71301	VHM/H220	VHM Window Heater 110-265VAC (PTC Element)
79623	VHM/PC-1	Plug-in shield for VHM/EC&ST Housing Series, 330mm, RAL7032

Technical drawing



Maße/Dimensions: mm

SLD Security & Communications
 The Old Forge, Ockham Lane, Ockham, Surrey GU236PH England
 Phone +44.1483225633 · Fax +44.1483225634
 sales@sld.co.uk · www.sld.co.uk

